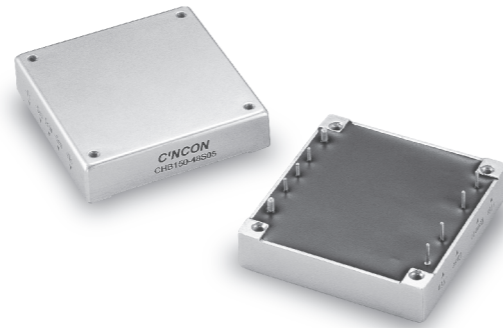


CHB150

S E R I E S

75-150 WATT 1/2 BRICK DC-DC CONVERTERS



Features

- 75-150W Isolated Output
- Half Brick Package
- Regulated Outputs
- Efficiency to 85%
- 500KHz Switching Frequency
- Five-Sided Shield Metal Case
- Continuous Short Circuit Protection

MODEL NUMBER	INPUT VOLTAGE	OUTPUT VOLTAGE	OUTPUT CURRENT	INPUT CURRENT		% EFF.	SIZE
				NO LOAD	FULL LOAD		
CHB150-48S25	36-75 VDC	2.5 VDC	30A	25 mA	2.1A	74	Half-Brick
CHB150-48S33	36-75 VDC	3.3 VDC	30A	25 mA	2.6A	79	Half-Brick
CHB150-48S05	36-75 VDC	5 VDC	30A	25 mA	3.7A	83	Half-Brick
CHB150-48S12	36-75 VDC	12 VDC	12.5A	25 mA	3.6A	85	Half-Brick
CHB150-48S15	36-75 VDC	15 VDC	10A	25 mA	3.6A	85	Half-Brick
CHB150-48S24	36-75 VDC	24 VDC	6.25A	25 mA	3.6A	85	Half-Brick

NOTE: 1. Nominal Input Voltage 48 VDC

Specifications

INPUT SPECIFICATIONS:

Input Voltage Range.....48V.....36-75V
 Undervoltage lockout48Vin power up 34V
48Vin power down32.5V
 Positive Logic Remote ON/OFF^{3,4}
 Input Filter PI Type

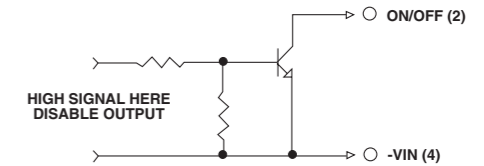
OUTPUT SPECIFICATIONS:

Voltage Accuracy :±1% max.
 Transient Response :25% Step Load Change.....<500µ sec.
 External Trim Adj. Range±10%
 Ripple & Noise, 20MHz BW, 2.5V & 3.3V & 5V..... 40mV RMS., max.
 100mV pk-pk, max.
 12V & 15V..... 60mV RMS., max.
 150mV pk-pk, max.
 24V.....100mV RMS., max.
 240mV pk-pk, max.
 Temperature Coefficient..... ±0.03%/°C
 Short Circuit Protection..... Continuous
 Line Regulation¹±0.2% max.
 Load Regulation²±0.2% max.
 Over Voltage Protection trip Range, % Vo nom.....115-140%
 Current Limit110% ~140% Nominal Output

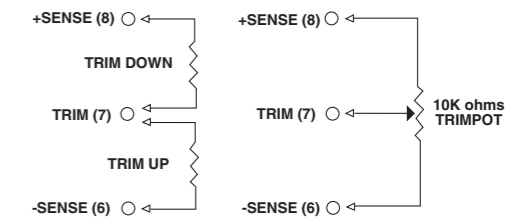
GENERAL SPECIFICATIONS:

Efficiency.....See Table
 Isolation VoltageInput/Output..... 1500VDC min.
Input/Case..... 1500VDC min.
Output/Case.....1500VDC min.
 Isolation Resistance10⁹ ohm min.
 Switching Frequency500KHz, Typ.
 Operating Case Temperature-40°C to 100°C
 Storage Temperature-40°C to +105°C
 Thermal Shutdown, Case Temp.100°C Typ.
 Dimensions2.28x2.40x0.50 inches
(57.9x61.0x12.7 mm)
 Case Material.....Aluminum
 Weight.....100g

Remote On/Off Control



External Output Trim



PIN CONNECTION

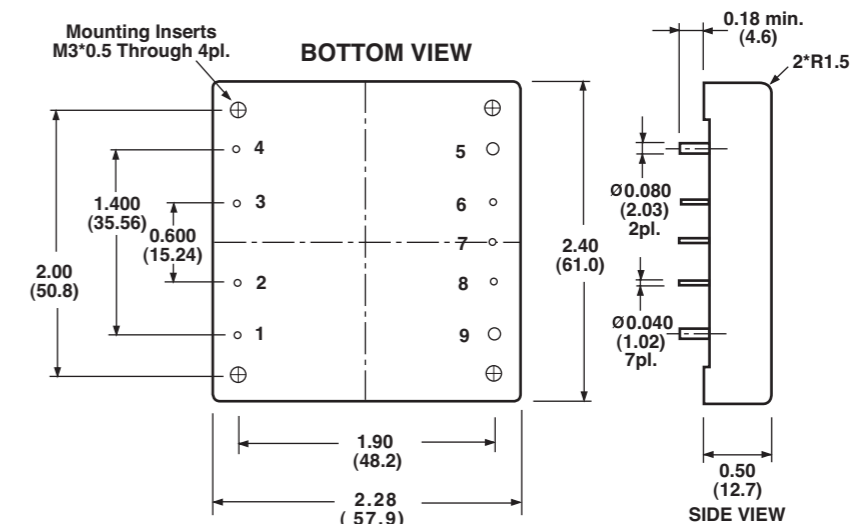
Pin	Function
1	+V Input
2	ON/OFF
3	CASE
4	-V Input
5	-V Output
6	-Sense
7	Trim
8	+Sense
9	+Vout

NOTE:

1. Measured From High Line to Low Line.
2. Measured From Full Load to Zero Load.
3. Logic CompatibilityOpen Collector Ref. to -Input.
 Module ONOpen Circuit
 Module OFF<0.8Vdc
4. Suffix "N" to the Model Number with Negative Logic Remote ON/OFF.

CASE HB

All Dimensions In Inches(mm)
 Tolerance Inches: x.xx= ±0.02, x.xxx= ±0.010
 Millimeters: x.x= ±0.5, x.xx= ±0.25



All Specifications Typical At Nominal Line, Full Load and 25°C Unless Otherwise Noted.