

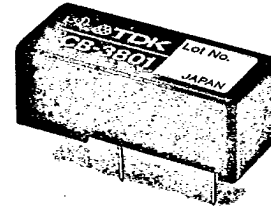
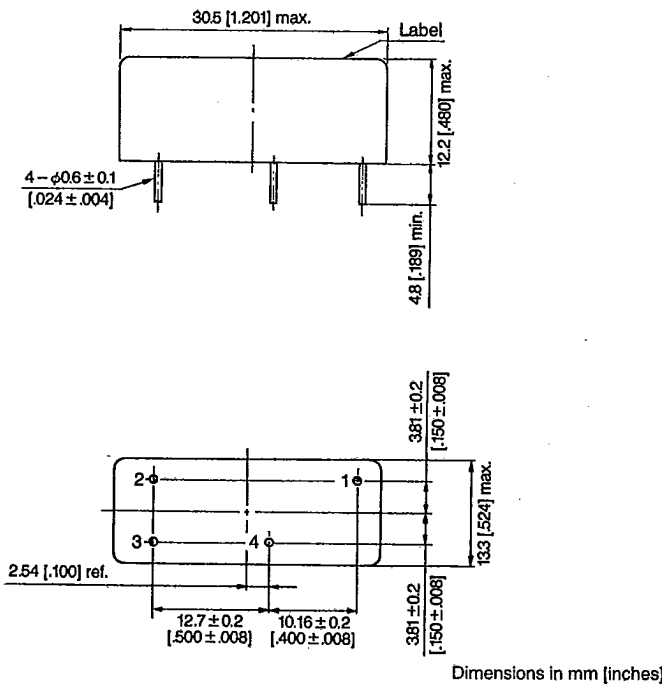
CB SERIES DC TO DC CONVERTERS

TDK CB series was developed for the standard application of DC to DC conversion to drive ICs, LSIs, OP amp's and other devices from TTL lines (+5V), and for this task it features a high efficiency, compact, lightweight and a high output stability. By widening the input voltage range, the series also functions effectively as a power supplies for battery-powered equipment, and a smoothing capacitor is contained in the output.

FEATURES

- High efficiency
- Highly stable output voltage
- Compact and lightweight (can be mounted on PCB)
- Complete molded configuration
- Wide input voltage range

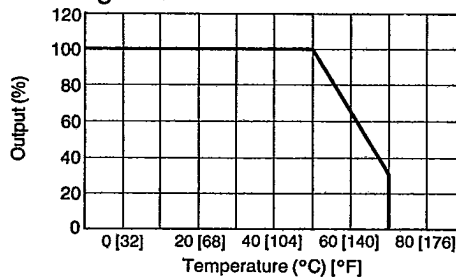
SHAPES AND DIMENSIONS



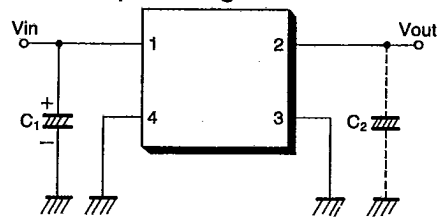
TEMPERATURE AND HUMIDITY RANGES

Operating temperature	0 to 50°C [32 to 122°F]
Storage temperature	-2 to +80°C [-4 to +176°F]
Humidity	95% max. (Maximum wet-bulb temperature: 38°C [100.4°F])

Derating curve



Terminal pin configuration



C₁: Electrolytic capacitor with capacitance of over 22μF
C₂: Attached if required

Terminal pin No.	Part No.	Part No.
1	CB-3801	CB-3810
2	CB-3802	CB-3811
3		CB-3812
1	+ Vin	+ Vin
2	- Vout	+ Vout
3	Common out	Common out
4	Common in	Common in

• Terminal pins 3, 4 are inside common.

TDK DC to DC Converters, DC to AC Inverters

300mW

T D K CORP

4DE D ■ 8821248 0004990 6 ■ TDKA T-57-11

ELECTRICAL CHARACTERISTICS

Part No.	Input voltage (V)	Output* ¹ voltage (V)	Output current (mA)	Ripple and noise voltage* ² (mV p-p) max.	Output voltage stability depending on:			Efficiency* ³ (%) min.	Weight (g)
					Input (%) max.	Load (%) max.	Temp. (%/°C) max.		
CB-3801	+3 to +7	+12 ± 0.5	0 to 25	900	1.5	1.5	0.1	65	7
CB-3802		+15 ± 0.6	0 to 20	1000					
CB-3810	+4 to +7	-5 ± 0.2	0 to 50	600	4.0	3.5	0.12	55	
CB-3811	+3 to +7	-12 ± 0.5	0 to 25	900	1.5	2.0	0.1	60	
CB-3812		-15 ± 0.6	0 to 20	1000					

*1, *3 Maximum load at 5V input, 25°C [77°F]

*2 250mV max. with externally mounted tantalum capacitor (47µF). Measured with a 25MHz bandwidth.